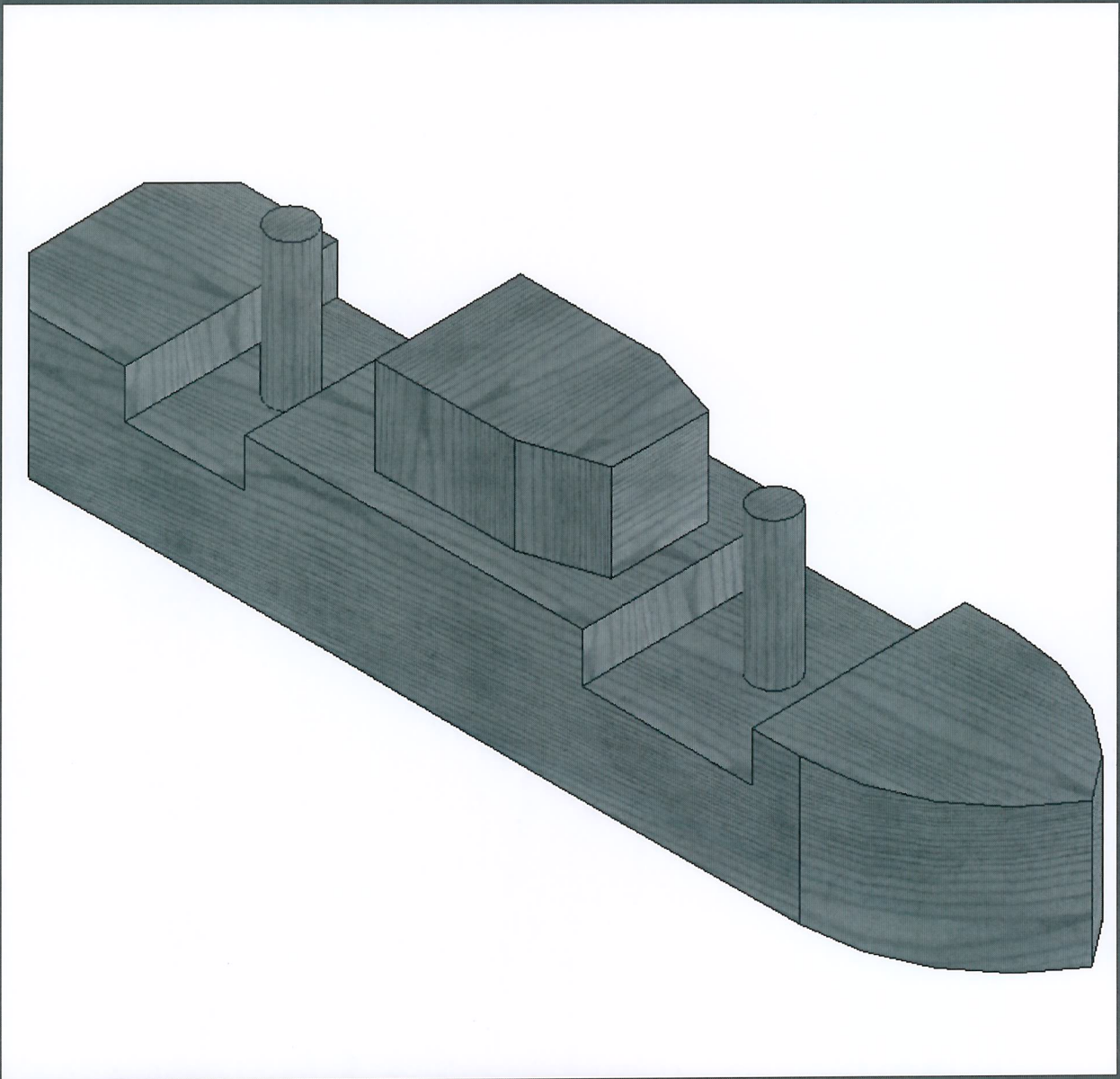


Cargo Ship



CARGO SHIP

Design Brief:

Design & make a model cargo ship. The shape of the hull must be designed by each student

Objectives of Project:

At the end of this project student will be able to:

- *Analyse and develop an appreciation for shapes and designs of wooden model toys*
- *Develop a design for shape of given project*
- *Mark out and process trenches, drill holes and edge shapes*
- *Assemble parts using gluing and clamping techniques*
- *Prepare a project for finishing and apply a chosen finish*

Pre-required Knowledge & Skills:

- *Basic marking out skills*
- *Basic sawing and chiseling (trench exercise) techniques*
- *Drilling*
- *Basic sketching skills*

Tools & Equipment Required:

- *Standard bench tools, Pillar Drill*

Materials Required:

Materials per student:

Item	Amount	Width	Thickness	Length	Material
Base	1	44mm	30mm	220mm	Red deal
Wheel House	1	44mm	30mm	20mm	Red deal
Chimneys	2	9mm dia		50mm	dowel

Theory Related to Project:

Topics or areas of syllabus that can be covered as part of project:

- *Marking out tools*
- *Saws and Chisels*
- *Drilling*
- *Adhesives*
- *Wood finishes and finishing*
- *Project designing*
- *Freehand Sketching*
- *Health & Safety (attached to all relevant areas of syllabus)*

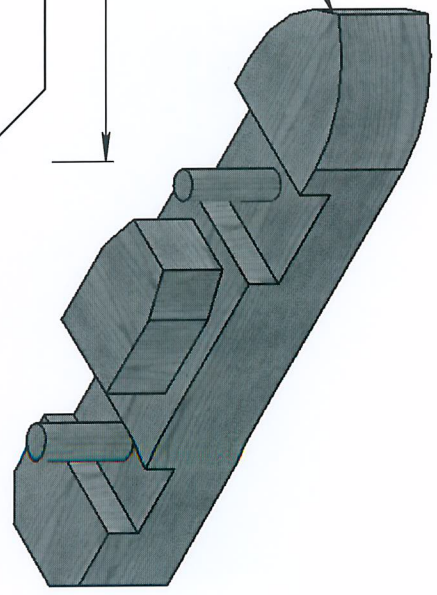
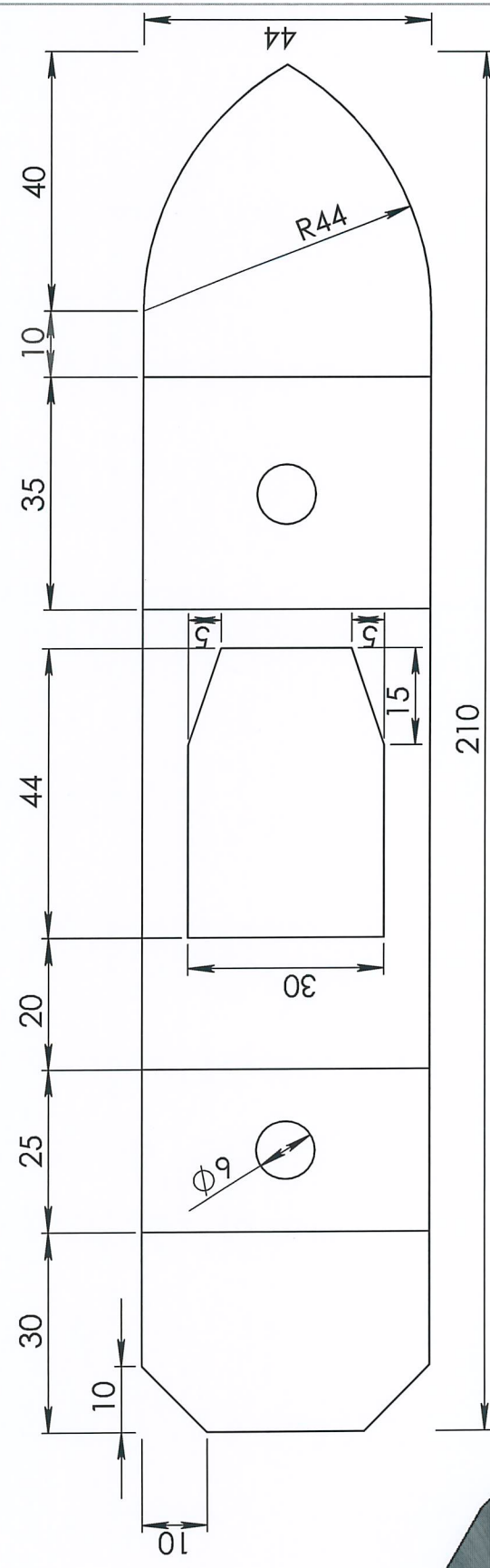
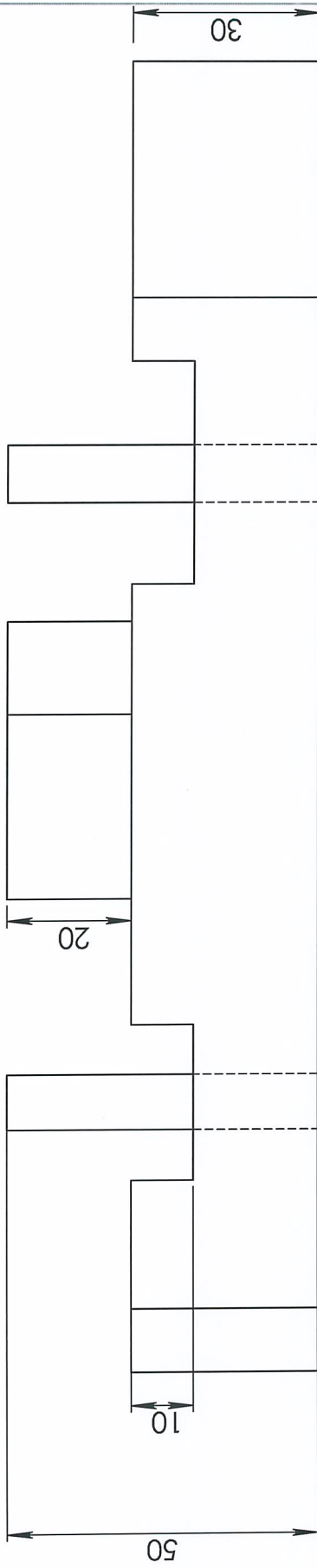
Time Allocation

Estimated amount of classes:

Start Date:

Finish Date:

Notes

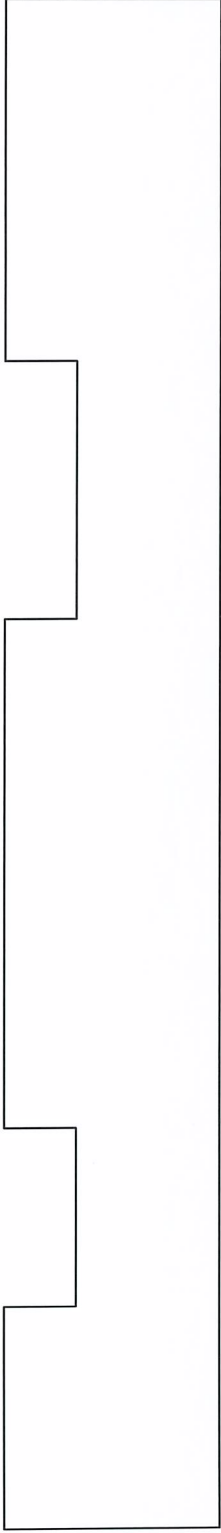


Sample design

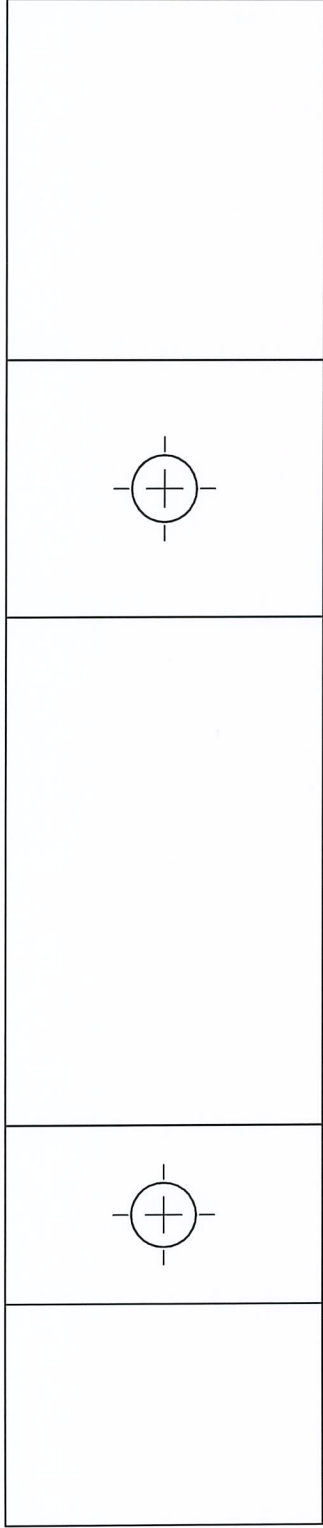
TITLE: CARGO SHIP	
DRAWN BY:	UNLESS OTHERWISE SPECIFIED ALL DIMENSIONS ARE IN mm
SCALE: 1:1	DATE:

SHIP HULL DESIGN

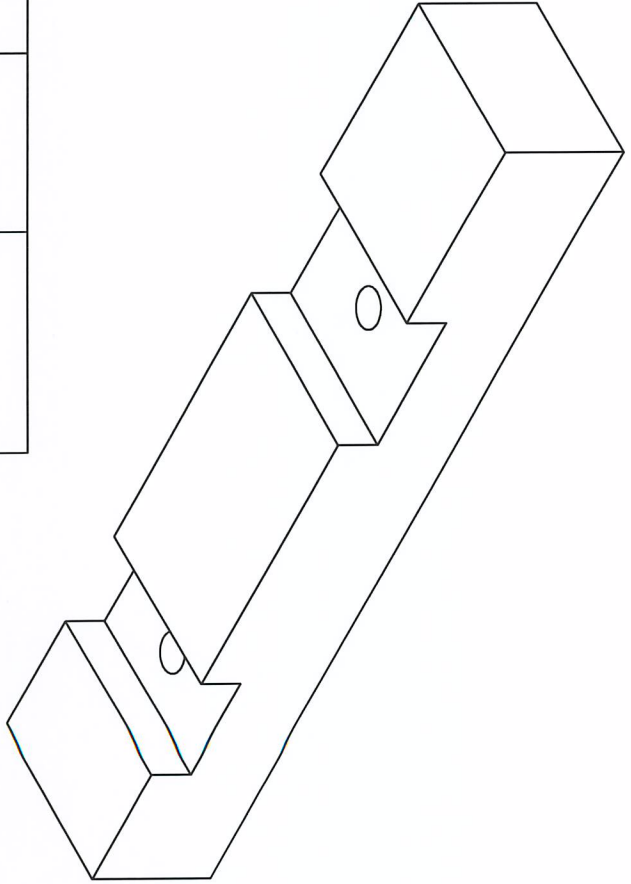
- DRAW IN YOUR DESIGN ON PLAN & ELEVATION
- WRITE IN MEASUREMENTS
- COMPLETE 3D DRAWING



ELEVATION



PLAN



TITLE:

base

DRAWN BY:

SIZE
A4

UNLESS OTHERWISE SPECIFIED ALL
DIMENSIONS ARE IN mm

SCALE: 1:2 Date: